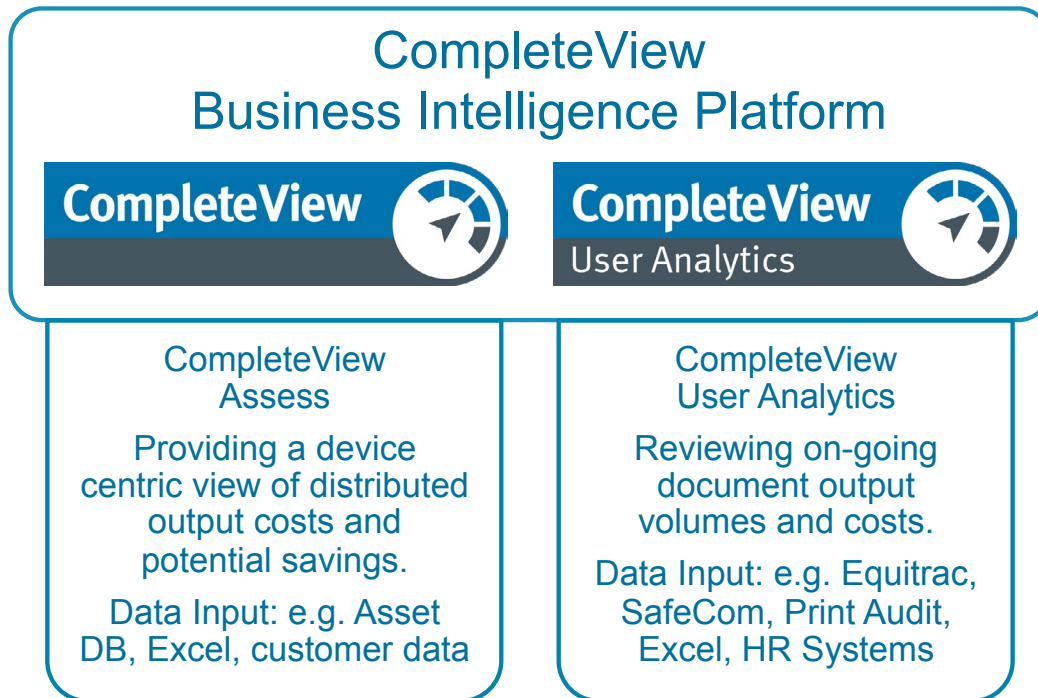


CompleteView® Business Intelligence Platform: User Analytics

CompleteView

CompleteView is a dynamic, interactive, cloud based business intelligence platform developed by NewField IT, a Xerox Company. The CompleteView platform offers a number of applications providing insights into customers' document output and supports cost down / business efficiency initiatives:



CompleteView User Analytics

CompleteView User Analytics provides an on-going, dynamic view and analysis of the document output by taking a data feed from a print management application (e.g. Equitrac® or SafeCom™ and Print Audit®)* directly into CompleteView.

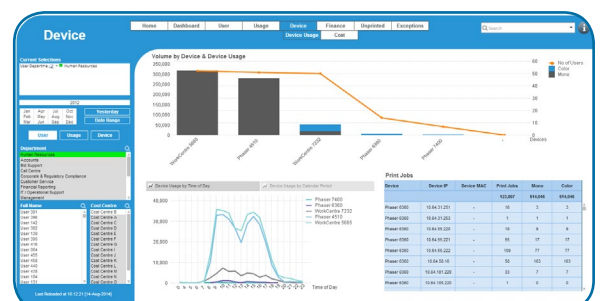
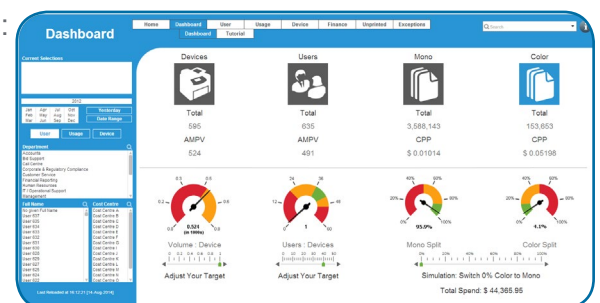
The dashboard provides clients with a number of key capabilities:

- Quickly explore data in a clear visual manner rather than plain text reports
- Make use of CompleteView's interactive dashboard technology supported by an associative data model
- Make decisions based on insights not assumptions: visualize what, when, where and how print happens
- Save valuable time and automate internal recharging
- Reconcile the differences between monitoring software and MPS provider billing
- Eliminate rogue data for insights down to every detail
- Adjust data privacy levels to match local data protection legislation

The different ways to review the information:

- By user / department
- By application
- By device
- By cost center

And almost unlimited combinations of the above.



*Equitrac and SafeCom are trademarks registered by Nuance®; Print Audit is a trademark registered by Print Audit®

SQL Server hosting source data

NFIT Data Communication Tool extracts and packs the data

Data transferred in a secure but firewall friendly way

Data is transformed and normalized ready for presentation layer

CompleteView secure (SSL) web portal with online banking grade security

Uploading data from a print management application to CompleteView

Install the Data Communicator on the print management accounting server - the tool packages and uploads the encrypted job data to CompleteView via HTTPS.

Data privacy is respected at all times, with options that remove sensitive data BEFORE it leaves the print management accounting server.

Uploading additional data to CompleteView

Additional data may be uploaded to the platform to enhance / correct data generated by the print management application.

Correcting data errors

Printer drivers may produce deviations in data in a print management application database - uploading a list of jobs to exclude can balance this out.

Fixing HR detail inaccuracies

Active Directories can contain the right level of detail to enable accurate department by department reporting / analysis. The option to upload this data directly to CompleteView ensures accurate reporting.

Adding MPS charges

While it is possible to set pricing in a print management application itself, the ability to upload actual MPS costs provides the accurate actual costs down to a user level. This ensures that costs are recovered / reported accurately and eliminates issues arising from differences in print management application reported volumes and device based billing from vendors.

